

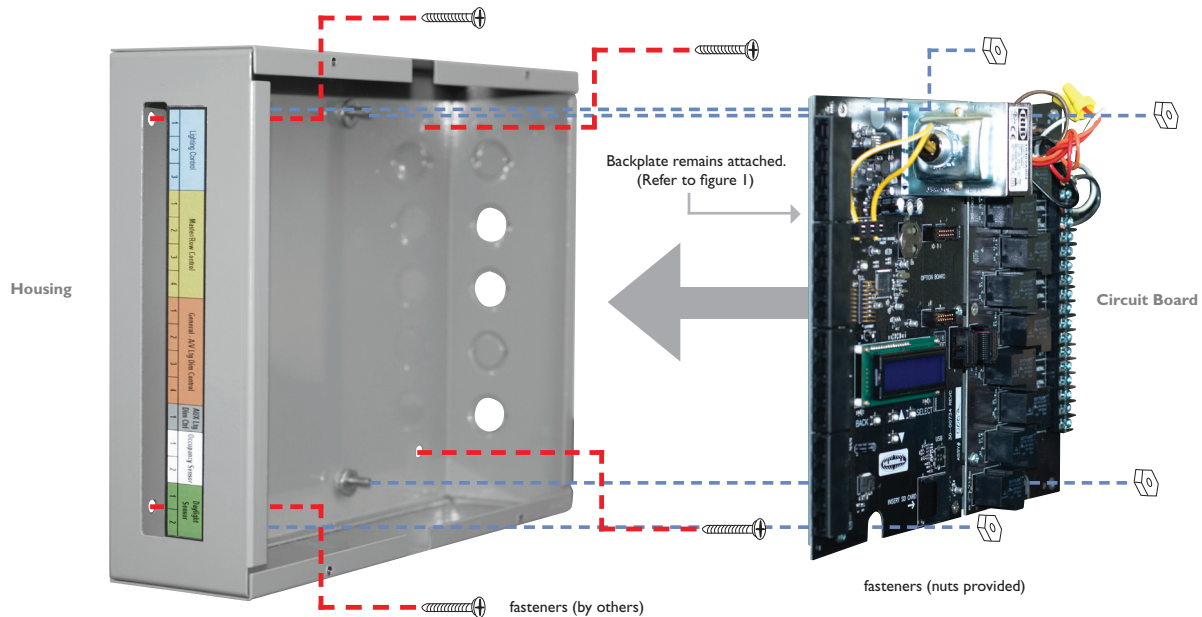
Zone5™ CONTROL MODULE MOUNTING/INSTALLATION GUIDE

Installation Instructions

**Hubbell Building Automation**  
 9601 Dessau Road • Building One • Suite 100 • Austin, TX 78754  
 Toll Free: 888-698-3242 • Fax: 512-450-1215  
 www.hubbell-automation.com

**Use in conjunction with Quick Start Guide and Line Voltage Wiring Diagram provided with the ZCM and included on the Zone5™ SD Card.**

ZCM Housing must be located in plenum, electrical closet, or other secure location.  
 Temperature rating is 0°C to 40°C.



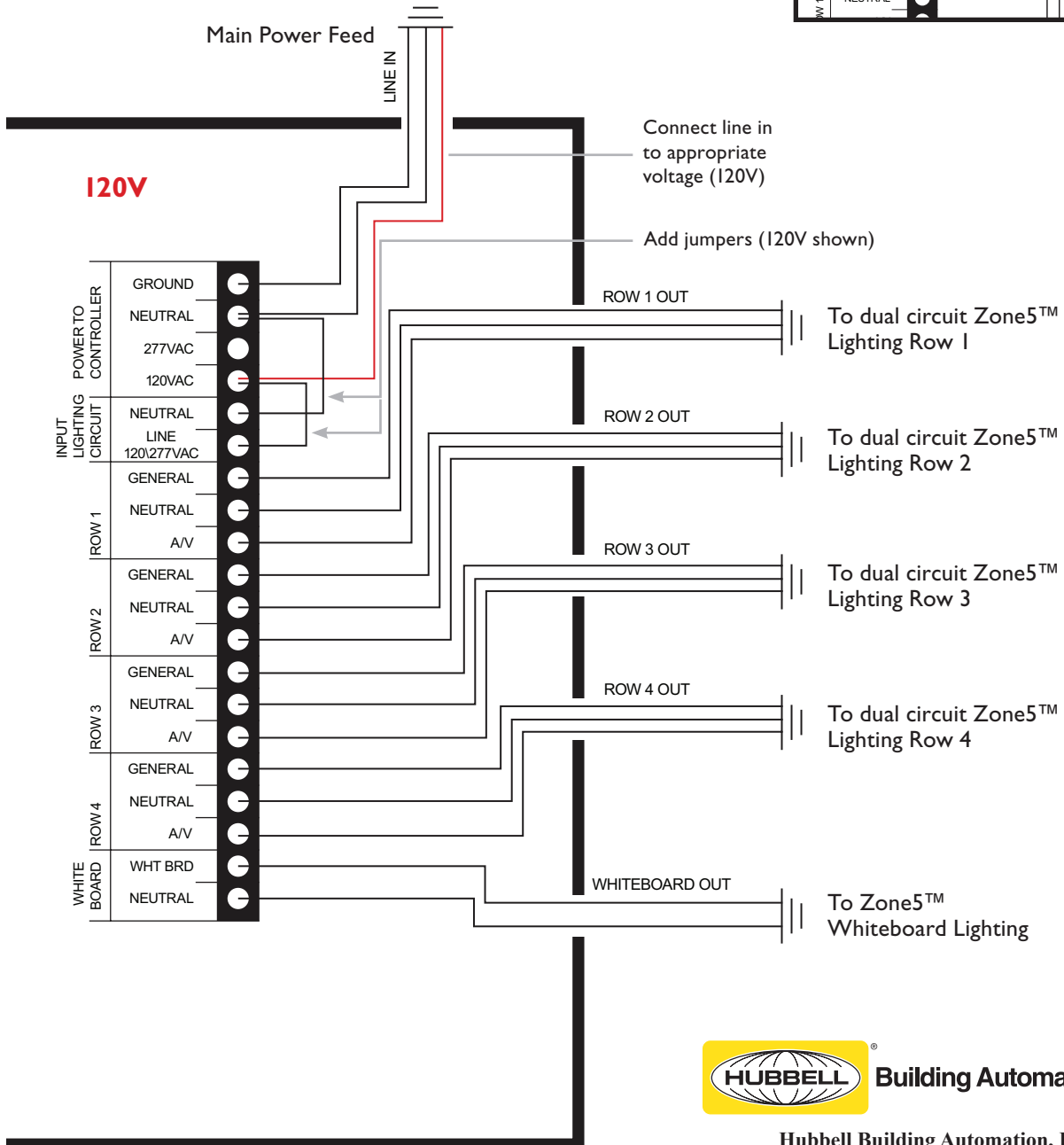
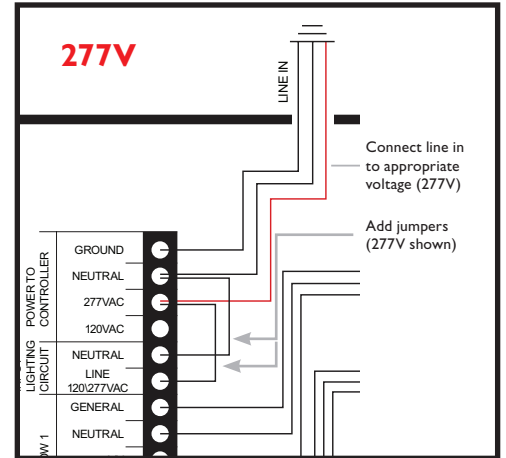
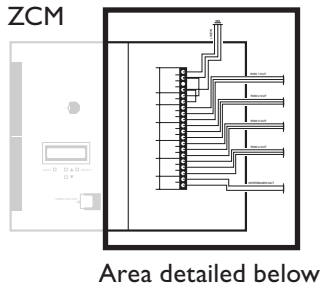
1. Use a 7/16" nut driver to remove the four backplate retaining nuts.
2. Remove the whole backplate / circuit board assembly from the enclosure. **Note: Do not remove the circuit boards from the backplate. (see figure 1).**
3. Mount the box to the surface.
4. Install the whole backplate / circuit board assembly into the enclosure.
5. Use a 7/16" nut driver to attach the four backplate retaining nuts into place.
6. Wire the unit per instructions. See wiring diagram on back. (See reverse side for line voltage wiring diagram examples)

figure 1



**Installation must be performed by qualified professional electrician in accordance with all local, state and national codes.**

# Zone5™ 4 ROWS, WBD Control Module (ZCM) Wiring Diagrams: Line Voltage



Hubbell Building Automation, Inc.  
 9601 Dessau Road | Building One | Austin, Texas 78754  
 {888} 698-3242 | {512} 450-1215 fax  
 hubbell-automation.com  
 72-00448