



Wireless Lighting Controls wiHUBB™ Access Point



KEY FEATURES

- Web-based commissioning and monitoring of the wiHUBB lighting control system
- Integrated web server provides connection via standard web browsers
- Easy system access from the local network or Internet
- Intuitive and easy-to-use Graphical User Interface (GUI)
- Ability to schedule wiHUBB-enabled devices or groups of devices
- Provides On/Off and dimming control of wiHUBB-enabled devices and groups of devices
- View power consumption from each device
- Robust & reliable 900Mhz wireless self-organizing and self-healing mesh network
- FCC certified
- Five-year limited warranty



WIH-AP

OVERVIEW

Hubbell Building Automation's wiHUBB™ Access Point is a user-friendly, web-based device for commissioning and monitoring devices within the wiHUBB wireless mesh network. The intuitive and easy-to-use Graphical User Interface (GUI) provides building owners and facility managers with the ability to schedule and control individual wiHUBB-enabled devices or groups of devices. The wiHUBB Access Point communicates securely over wired TCP/IP connections using HTTPS/SSL. When transmitting over the 900MHz radio frequency to other devices within the wiHUBB wireless self-healing mesh network, the wiHUBB Access Point uses 128-bit Advanced Encryption Standard (AES-128).

SPECIFICATIONS

Power Requirements	• 120VAC with plug-in power supply (included)
RF Frequency	• 902 - 928MHz • Wireless Peer-To-Peer, Self-Organizing and Self-Healing Mesh Network • Advanced Encryption Standard AES-128 Security • Spread Spectrum Frequency Hopping
RF Range	• Supported distance between wireless devices: 100 meters (328 feet) • Maximum Transmission Output Power: +20 dBm • Maximum Receive Sensitivity: -118 dBm
Operating Environment	• Operating Temperature: 0°C to 40°C • Relative humidity (non-condensing): 0 – 95%
Construction	• Housing: Flame retardant ABS plastic, UL flame rating of 94-5VA
Size and Weight	• Size: 5.00”L x 7.50”W x 1.75”H • Weight: 6 oz
Color	• Black
Mounting	• Surface or wall mount (mounting screws provided)
Patents	• Patent(s) Pending
Certifications	• FCC Certified • IC Approved
Warranty	• Five- year limited

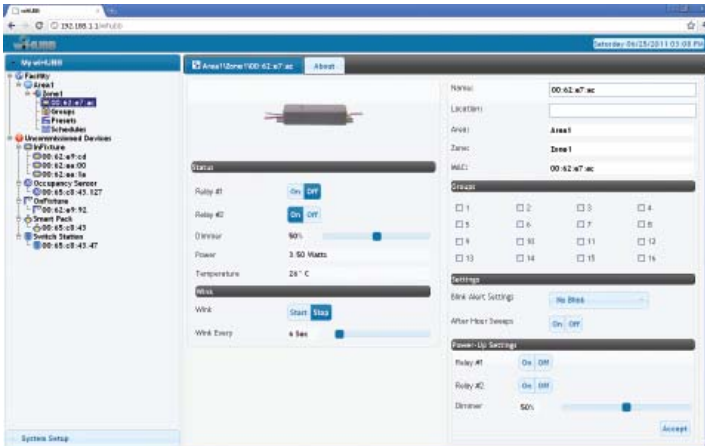
HOW TO ORDER

MODEL / DESCRIPTION

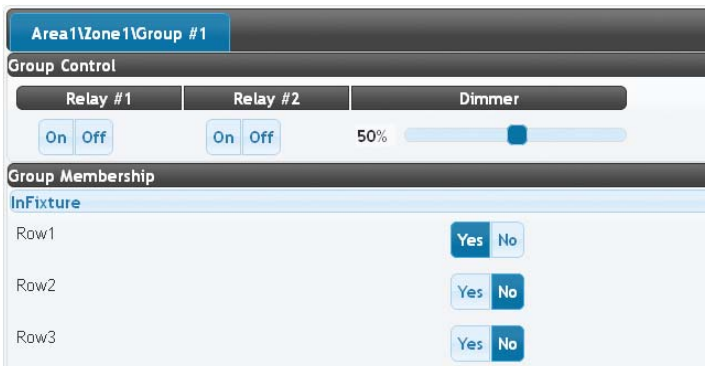
WIH-AP wiHUBB Access Point

SCREEN SHOTS

Device Settings



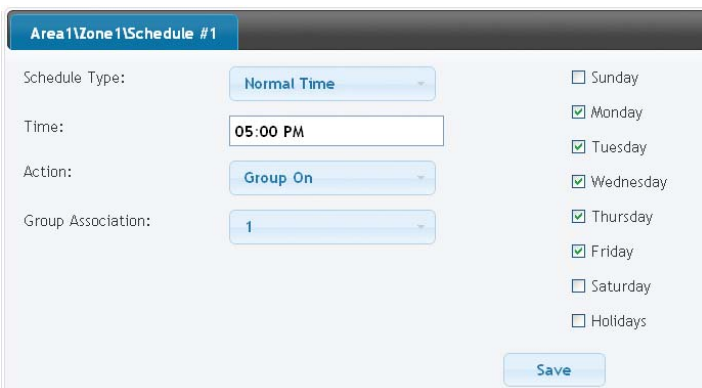
Group Management



Preset Management



Scheduling



Hubbell Building Automation, Inc.
 9601 Dessau Road | Building One | Austin, Texas 78754
 {512} 450-1100 | {512} 450-1215 fax
 hubbell-automation.com